

FDP POSITIVE DISPLACEMENT PUMPS

	Distance Between Axes (mm)	Lobe External Diameter (mm)	Thread Minor Diameter (mm)	Seal Internal Diameter (mm)	Distance Between Lobes (mm)	Lobe Height (mm)
FDP+ A 25	60	83,6	36	30	0,2	38
FDP+ A 40						42
FDP+ A 50						54
FDP+ B 40	75	104,5	45	35	0,25	44
FDP+ B 50						54
FDP+ B 65						70
FDP+ C 65	96	133,7	57,6	40	0,35	72
FDP+ C 80						85
FDP+ C 100						104
FDP+ D 100	120	167,1	72	53	0,45	104
FDP+ D 125						130
FDP+ D 150						155

PERFORMANCE CURVE

P BAR	10	FDP+ A-25		FDP+ B-40		FDP+ B-50	FDP+ C-80		FDP+ D-100		FDP+ D-15
	7	FDP+ A-40		FDP+ B-65			FDP+ C-65		FDP+ C-100	FDP+ D-125	
0	0	10	21	37	52	82	120				
Q m3/h											



FDP+ POSITIVE DISPLACEMENT PUMPS



HORIZONTAL



VERTICAL

YOUR SOLUTION PARTNER

FDP POSITIVE DISPLACEMENT PUMPS

APPLICATION

- » The FDP pump is a lobe rotor positive displacement pump of a sanitary design suitable for use in the dairies, foodprocessing, beverage, pharmaceutical and fine chemicals industries.
- » This pump is perfect for managing all kinds of fluid, of either low or high viscosity, in the food-processing, dairies, and cosmetics industries, as well as for filtering and bottling applications.

OPTIONS

- » Vertical support.
- » Rectangular nozzle.
- » Gaskets: FPM
- » Relief valve on the front cover or external by-pass.
- » Bi-wing lobes.
- » Heating chamber.
- » Trolley and/or control panel.
- » Connections: Clamp, SMS, etc.
- » Mechanical seals: SiC/SiC or TuC/SiC.
- » flushed mechanical seal (quench), double mechanical seal, lip seal (FPM or PTFE), gland packing, O-ring

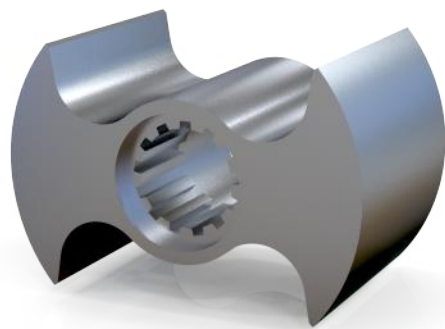
WORKING PRINCIPLE

- » The FDP rotary lobe pumps basically consist of two lobe rotors which rotate synchronously inside a casing without touching each other. As the rotors rotate, the spaces between the lobes and the casing are successively filled with the product, which is transported to the discharge nozzle with a fixed amount of displacement. The pumped fluid forms a continuous stream thanks to the tolerances between the lobes and the pump casing, thus ensuring an efficient pumping.

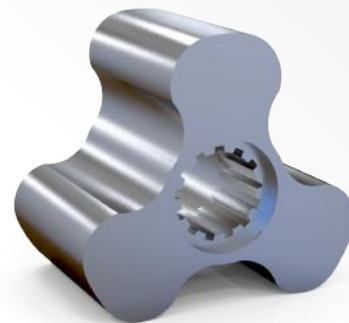
MATERIALS

- » Parts in contact with the product : AISI 316L
- » Bearing support : GG 25
- » Mechanical seal Gaskets : SiC/C/EPDM

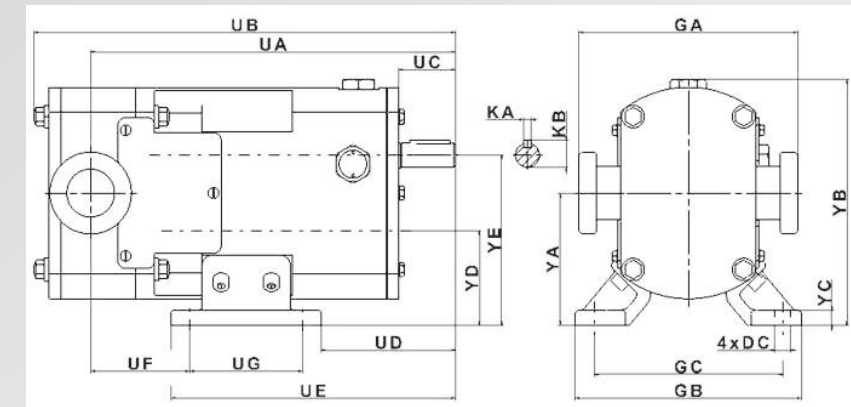
Winglobe



Trilobe



FDP POSITIVE DISPLACEMENT PUMPS



DIMENSIONS

TYPE	UA	UB	UC	UD	UE	UF	UG	GA	GB	GC	YA	YB	YC	YD	YE	KA	KB	GAP	DC
FDP+ A 25	277	319				66		166											
FDP+ A 40	277	323	45	106,5	226,5	66	90	174	180	150	105	195	12	75	135	8	28,3	24	12
FDP+ A 50	335	283				72		178											
FDP+ B 40	327	379				59		195											
FDP+ B 50	333	389	56	128	288	65	120	199	210	180	125	233	15	87,5	162,5	8	32	28	14
FDP+ B 65	341	405				73		209											
FDP+ C 65	425	496				81		244											
FDP+ C 80	432	509	81	169	369	90	150	254	265	225	163	298	18	115	211	10	41	38	16
FDP+ C 100	442	528				98		272											
FDP+ D 100	526	617				96		297											
FDP+ D 125	539	643	103	200,5	460,5	108	200	305	340	290	195	363	21	135	255	14	49,5	45	18
FDP+ D 150	552	668				121		313											

MODEL	MAX m3/h	MAX bar	100 rpm/lt	Max rpm
FDP + A-25	9,72	10 bar	18	900
FDP + A-40	10,8	7 bar	20	900
FDP + A-50	13,5	7 bar	25	900
FDP+ B-40	17,28	10 bar	32	900
FDP + B-50	21,6	10 bar	40	900
FDP + B-65	23,22	7 bar	43	900
FDP + C-65	36,54	7 bar	87	700
FDP + C-80	42,84	10 bar	102	700
FDP + C-100	52,5	7 bar	125	700
FDP + D-100	81,9	10 bar	195	700
FDP + D-125	102,48	7 bar	244	700
FDP+ D-150	122,22	7 bar	291	700